

# EKR

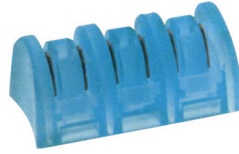
Kalp ve Damar Cerrahi  
Cardiovascular and Thoracic Surgery



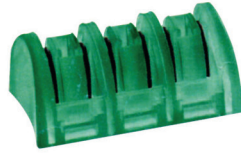
Küçük(sarı)  
Small(yellow)



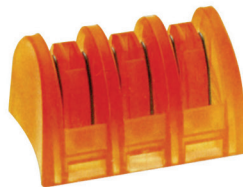
Orta(mavi)  
Medium(blue)



Orta-büyük(yeşil)  
Medium-large(green)



Büyük(turuncu)  
Large(orange)





Küçük(sarı)  
Small(Yellow)

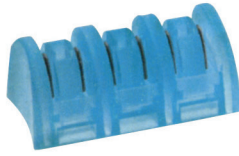


EG070-03 25°  
28 cm



EG071-03 65°  
28 cm

Orta(mavi)  
Medium(blue)

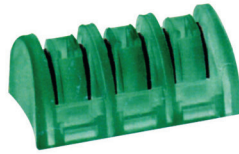


EG072-03 25°  
28 cm



EG073-03 65°  
28 cm

Orta-büyük(yeşil)  
Medium-large(green)



EG074-03 25°  
28 cm

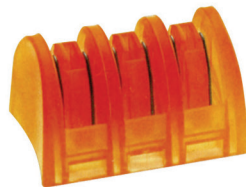


EG075-05 65°  
28 cm



EG076-03 90°  
28 cm

Büyük(turuncu)  
Large(orange)



EG077-03 25°  
28 cm

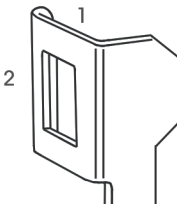


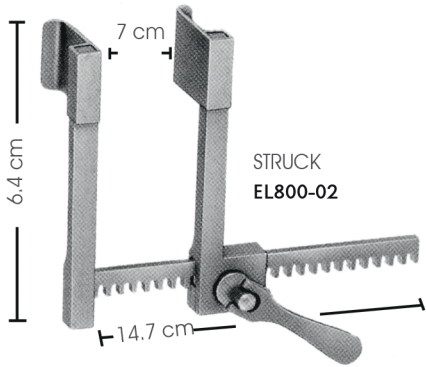
EG078-05 65°  
28 cm



EG079-03 90°  
28 cm

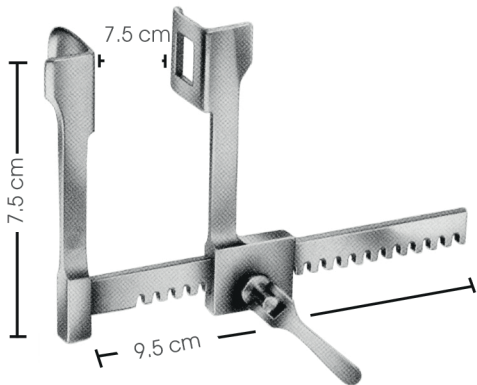


	<p>Göğüs ekartörü bleydleri için ölçü sistemi</p> <p>Derinlik : 1 Genişlik : 2</p> <p>Örnek: 1 x 2</p>	<p>Measurement system for rib retractor blades</p> <p>Depth : 1 Width : 2</p> <p>Example: 1 x 2</p>
---	--	---



STRUCK  
**EL800-00** Komple/Complete  
**EL800-02** Sadece Ekartör/Retractor Only  
**EL800-05-EL800-09** Bleydler(çift)/Blades(pairs)

Bleyd(çift)/Blade(pair)



FINOCHIETTO  
**EL802-00**  
Bleydler/Blades  
18 x 21 mm



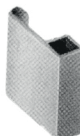
STRUCK  
**EL800-05**  
Bleydler/Blades  
10 x 10 mm



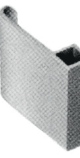
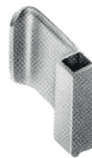
STRUCK  
**EL800-06**  
Bleydler/Blades  
10 x 15 mm



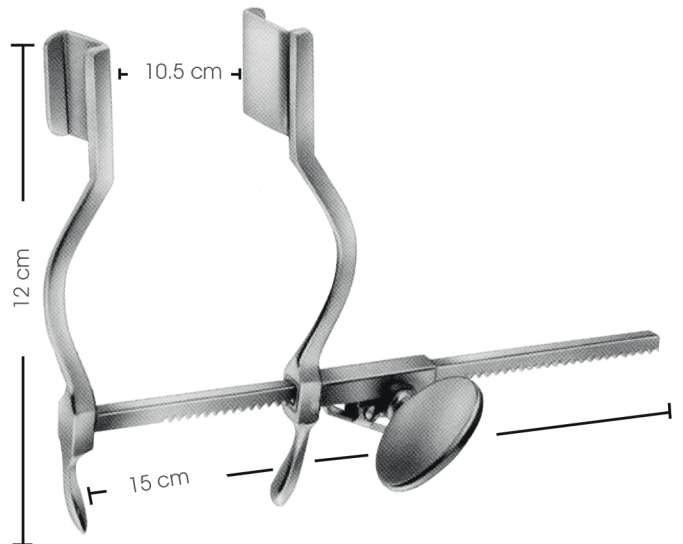
STRUCK  
**EL800-07**  
Bleydler/Blades  
10 x 20 mm



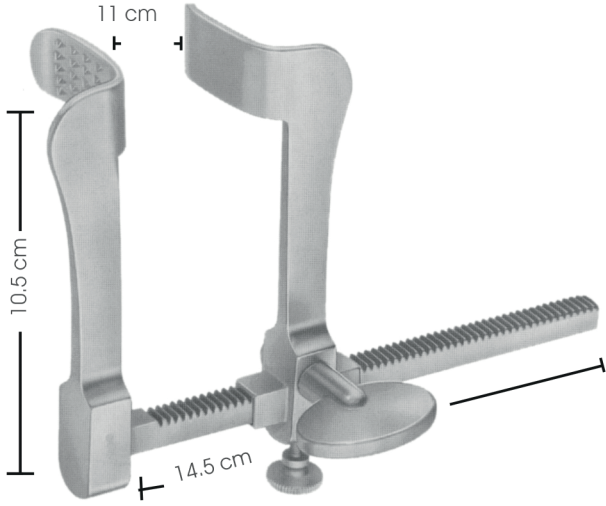
STRUCK  
**EL800-08**  
Bleydler/Blades  
15 x 20 mm



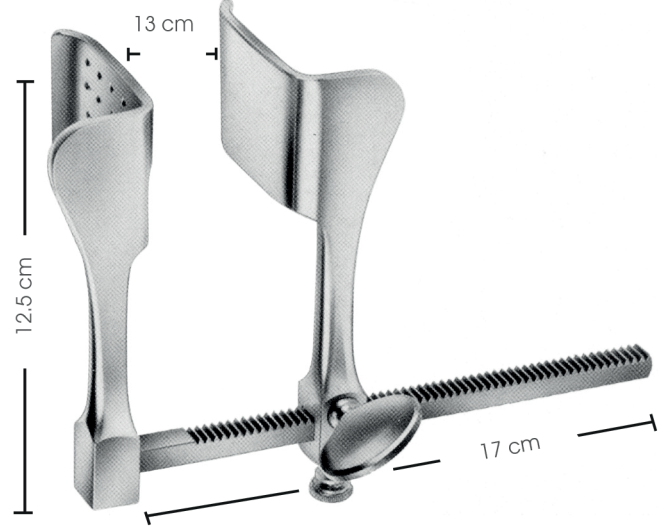
STRUCK  
**EL800-09**  
Bleydler/Blades  
20 x 20 mm



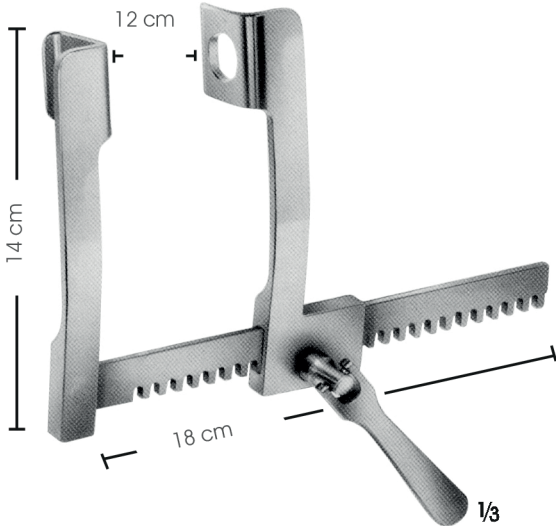
HERTZLER  
**EL522-00**  
Bleydler/Blades  
20 x 25 mm



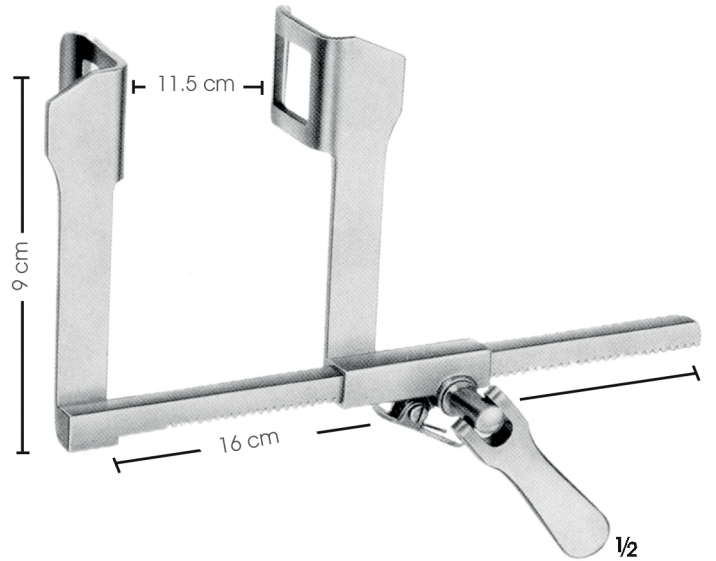
TUFFIER  
**EL803-00**  
Bebekler için göğüs ekartörü  
Rib retractor for infants  
Bleydler/Blades  
32 x 19 mm



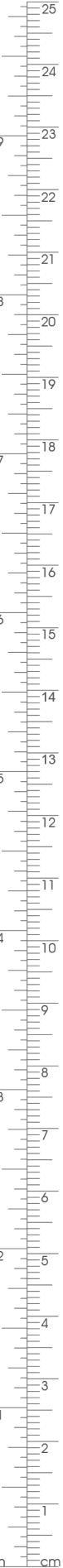
TUFFIER  
**EL804-00**  
Göğüs ekartörü/Rib Retractor  
Bleydler/Blades  
43 x 53 mm

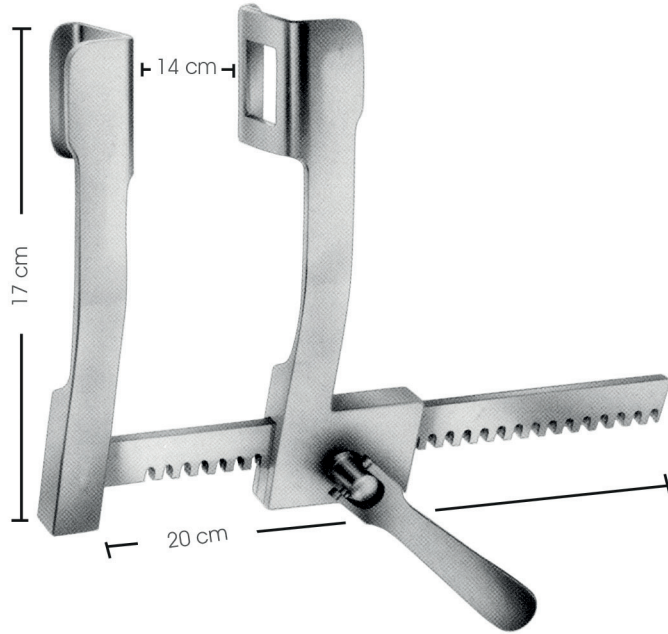


FINOCHIETTO  
**EL807-00**  
Göğüs ekartörü/Rib retractor  
Bleydler/Blades  
28 x 32 mm

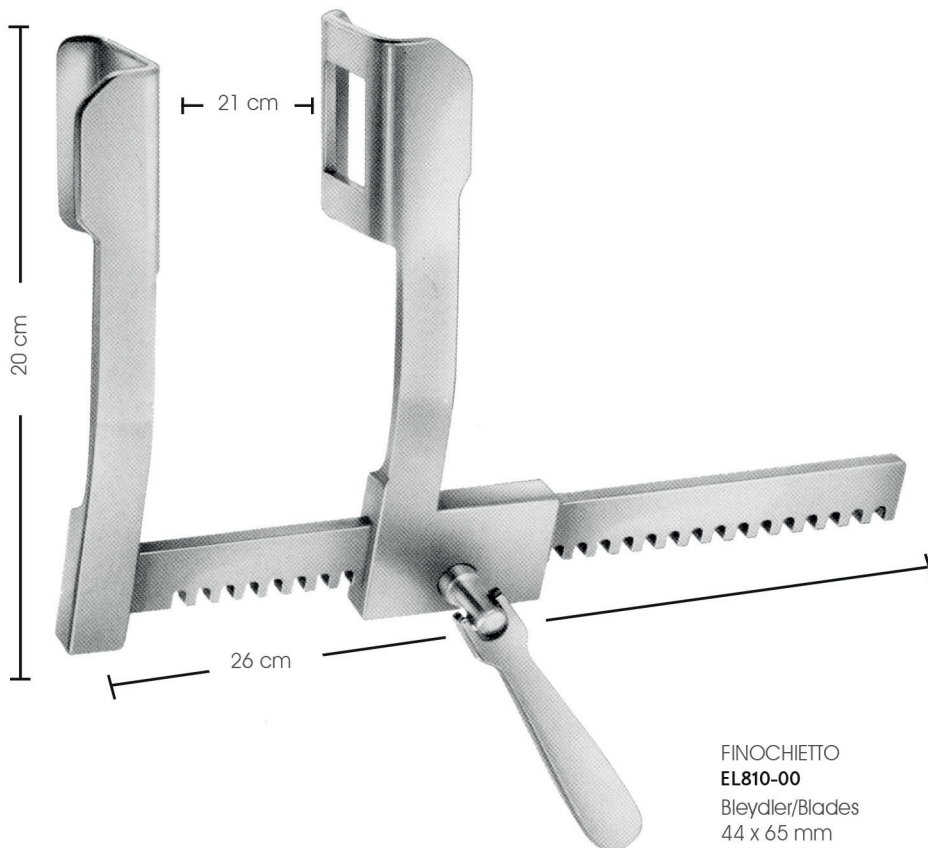


HAIGHT  
**EL806-00**  
Göğüs ekartörü/Rib retractor  
Bleydler/Blades  
30 x 30 mm



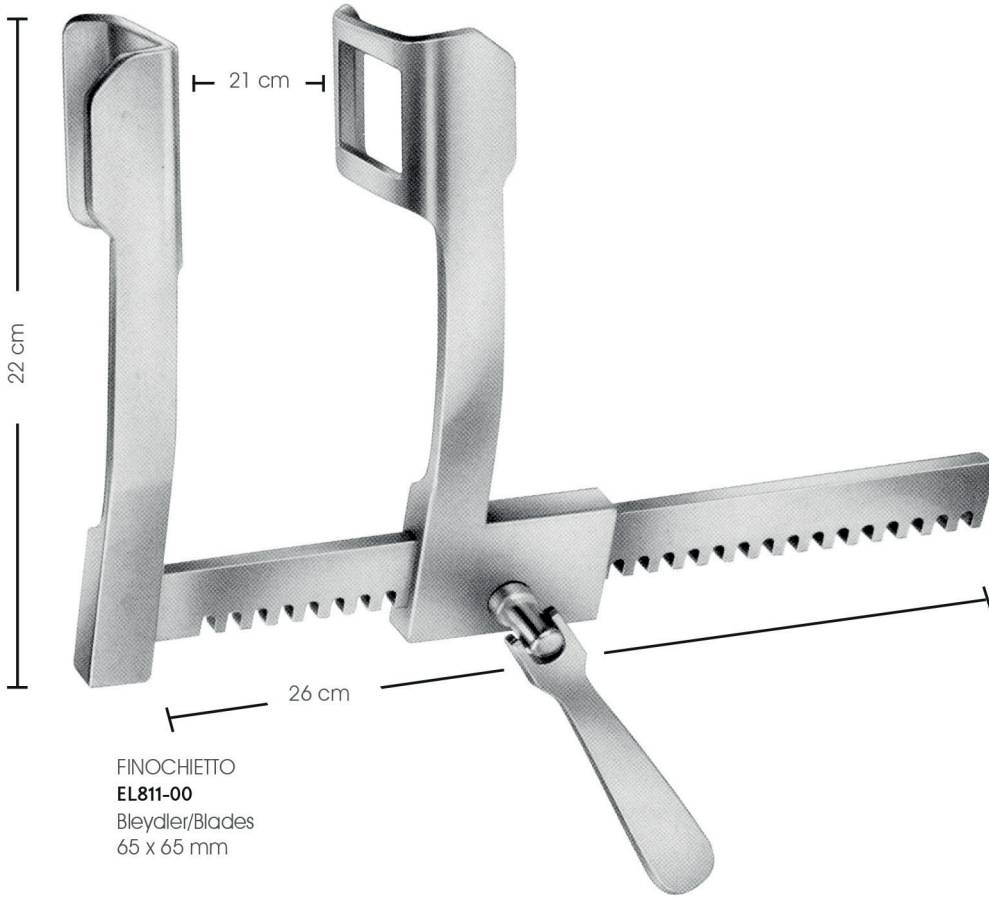


FINOCHIETTO  
**EL808-00**  
Bleydler/Blades  
36 x 45 mm

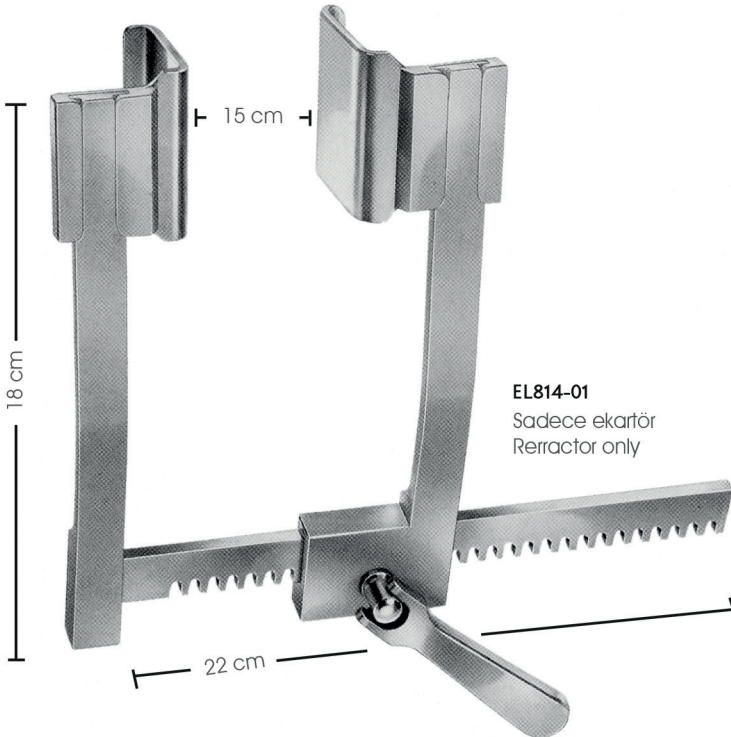


FINOCHIETTO  
**EL810-00**  
Bleydler/Blades  
44 x 65 mm



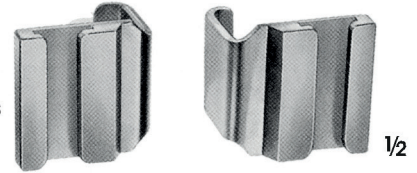


FINOCHIETTO  
**EL811-00**  
Bleydler/Blades  
65 x 65 mm

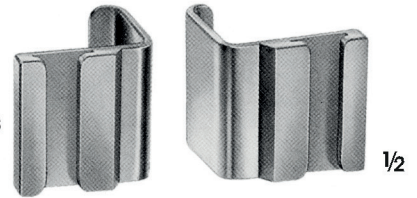


DE BAKEY  
**EL814-00** D0 Komple/Complete  
**EL814-01** 1 Sadece ekartör/Retractor only  
**EL814-05-EL814-06-EL814-07** Bleydler(çift)/Blades(pair)

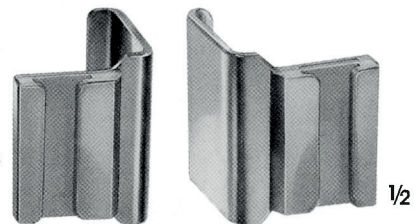
DE BAKEY  
**EL814-05**  
Bleydler/Blades  
30 x 30 mm



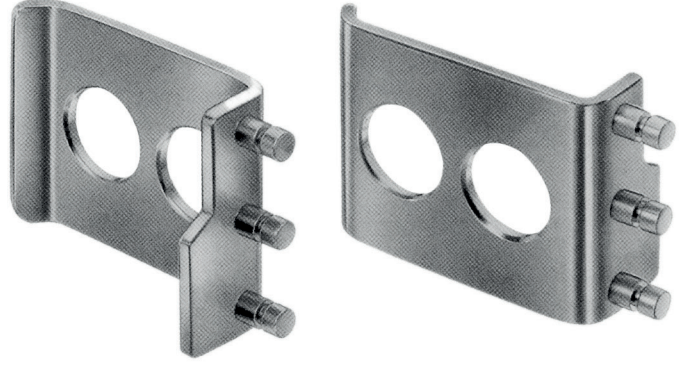
DE BAKEY  
**EL814-06**  
Bleydler/Blades  
40 x 40 mm



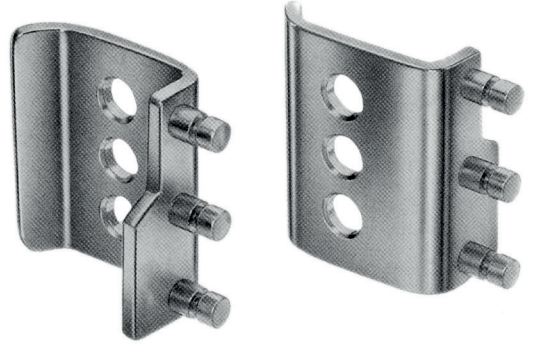
DE BAKEY  
**EL814-07**  
Bleydler/Blades  
50 x 50 mm



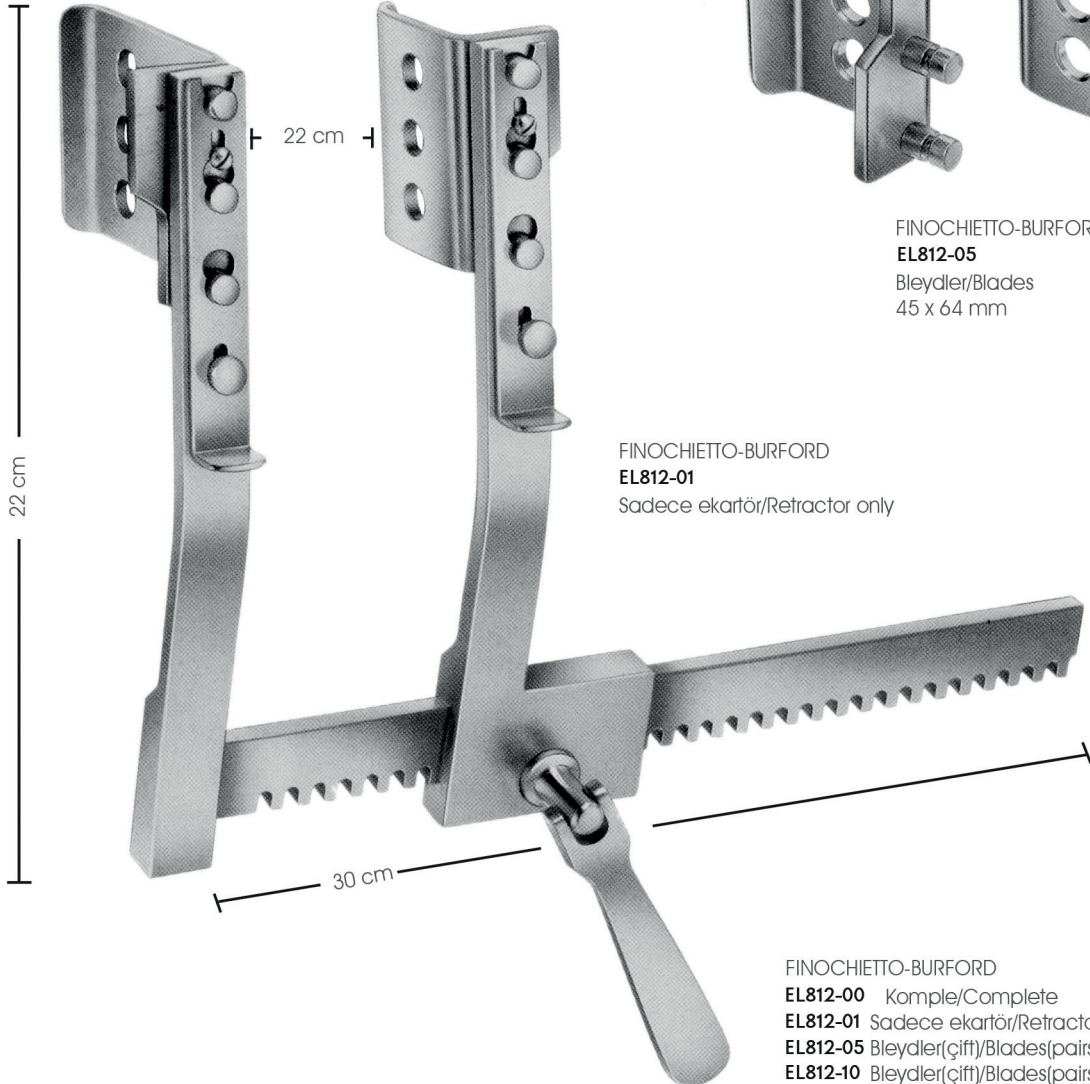




FINOCHIETTO-BURFORD  
**EL812-10**  
Bleydler/Blades  
75 x 64 mm



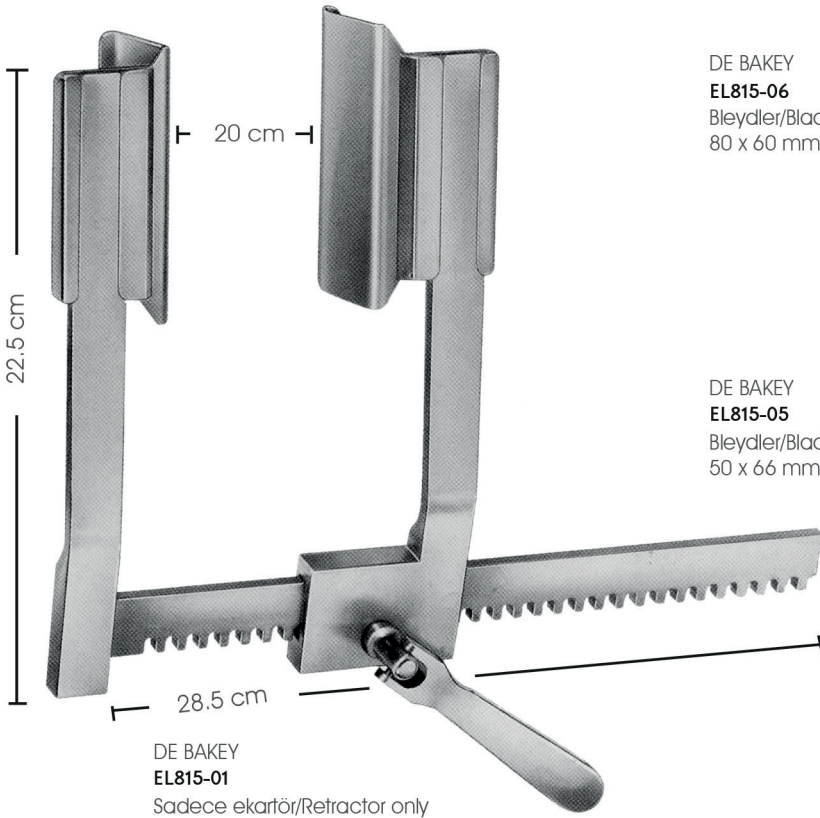
FINOCHIETTO-BURFORD  
**EL812-05**  
Bleydler/Blades  
45 x 64 mm



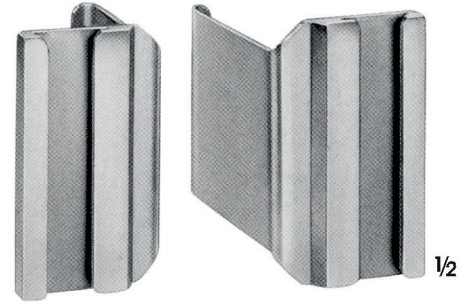
FINOCHIETTO-BURFORD  
**EL812-01**  
Sadece ekartör/Retractor only

FINOCHIETTO-BURFORD  
**EL812-00** Komple/Complete  
**EL812-01** Sadece ekartör/Retractor only  
**EL812-05** Bleydler(çift)/Blades(pairs)  
**EL812-10** Bleydler(çift)/Blades(pairs)

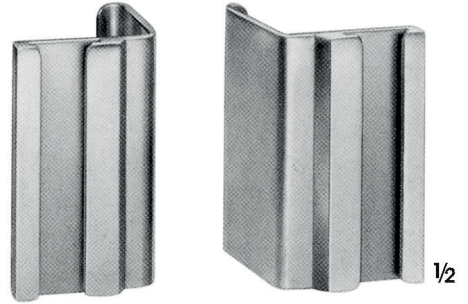
Özel Avantajlar:  
Değiştirilebilir bleydler için geliştirilmiş sabitleme sistemi  
Avantaj Special Advantages :  
Improved fixing system for interchangeable blades



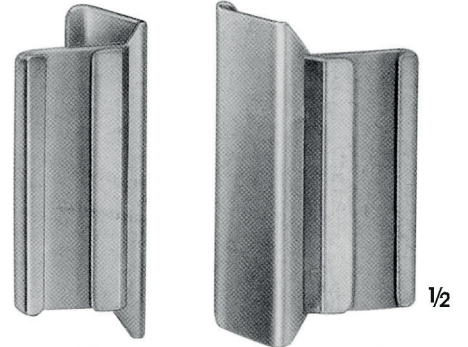
DE BAKEY  
EL815-09  
Bleydler/Blades  
60 x 60 mm



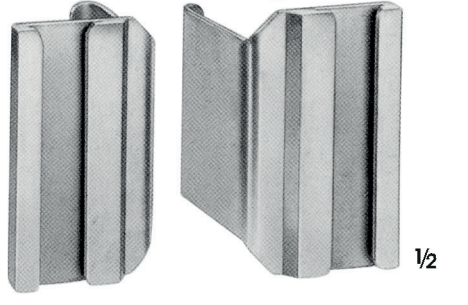
DE BAKEY  
EL815-08  
Bleydler/Blades  
50 x 80 mm



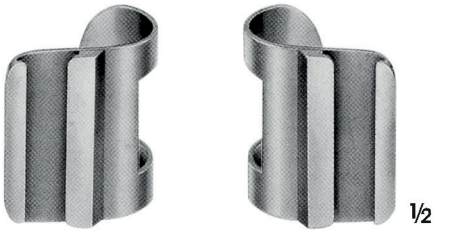
DE BAKEY  
EL815-07  
Bleydler/Blades  
40 x 100 mm



DE BAKEY  
EL815-06  
Bleydler/Blades  
80 x 60 mm

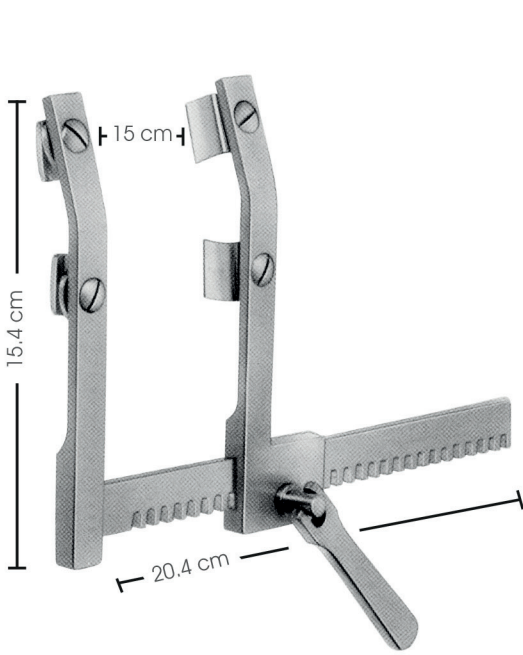


DE BAKEY  
EL815-05  
Bleydler/Blades  
50 x 66 mm



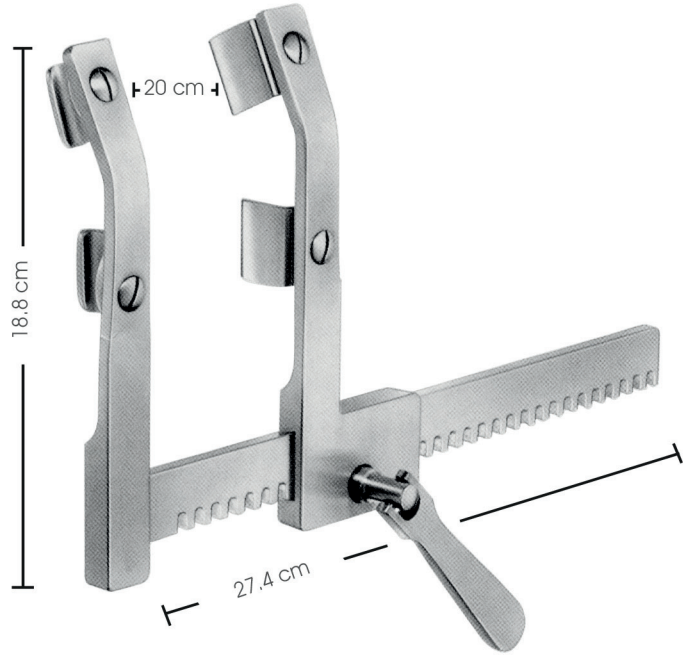
DE BAKEY  
EL815-00 Komple/Complete  
EL815-01 Sadece ekartör/Retractor only  
EL815-07 Bleydler(çift)/Blades(pair)  
EL815-08 Bleydler(çift)/Blades(pair)  
EL815-09 Bleydler(çift)/Blades(pair)





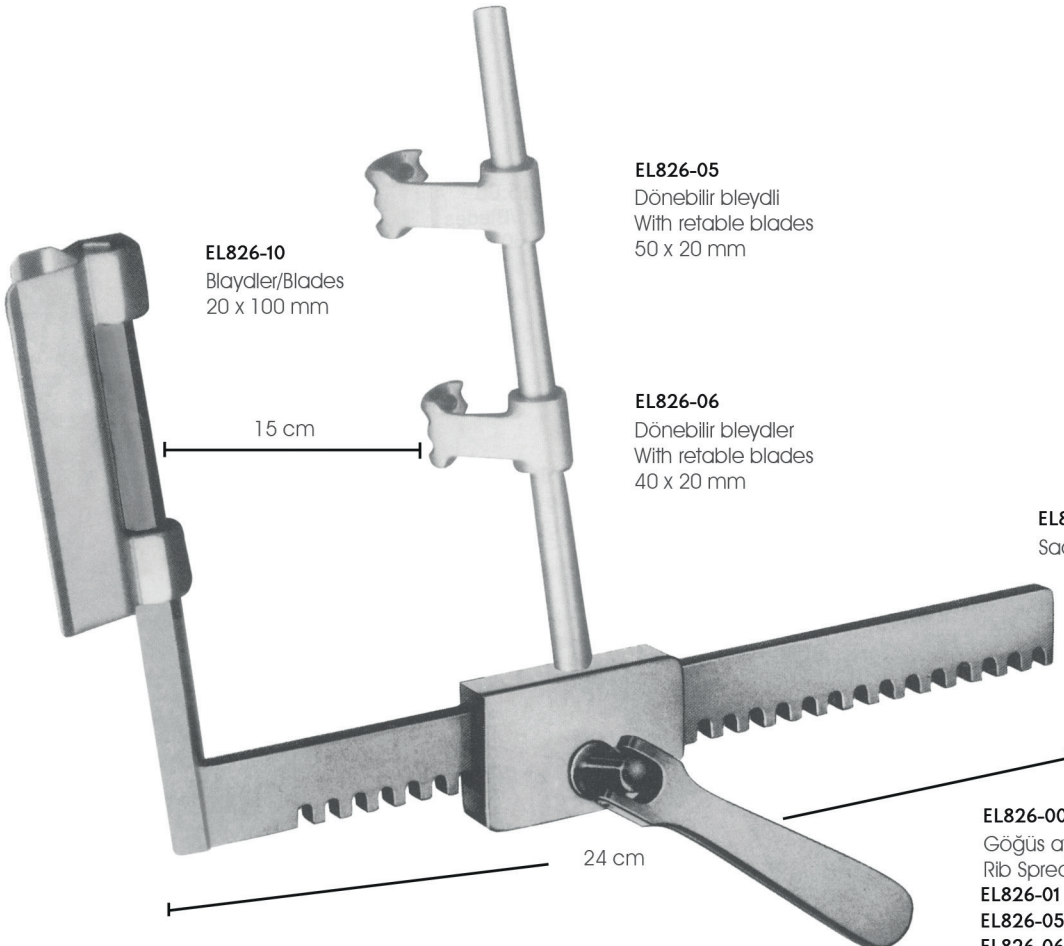
MORSE  
**EL820-00**

Sternum ayırıcı/Sternum spreaders  
Çocuklar için, hareket ettirilebilir çift bleydli  
For children with movable double blades  
Bleyd/Blade 12 x 20 mm



MORSE  
**EL820-01**

Sternum ayırıcı/Sternum spreaders  
Büyükler için, hareket ettirilebilir çift bleydler  
For adults with movable double blades  
Bleyd/Blade 19 x 29 mm



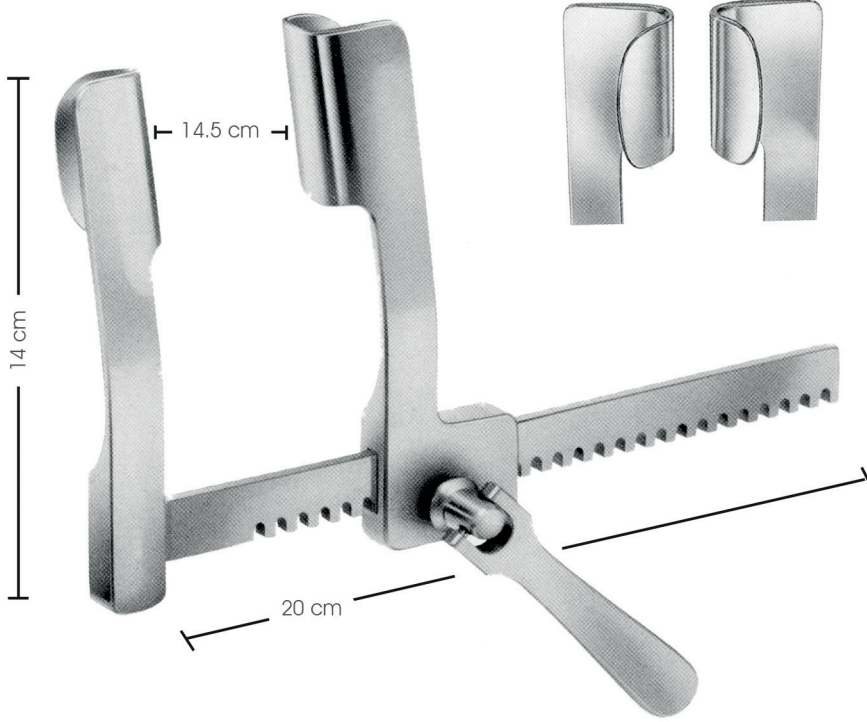
**EL826-10**  
Bleydler/Blades  
20 x 100 mm

**EL826-05**  
Dönebilir bleydli  
With retable blades  
50 x 20 mm

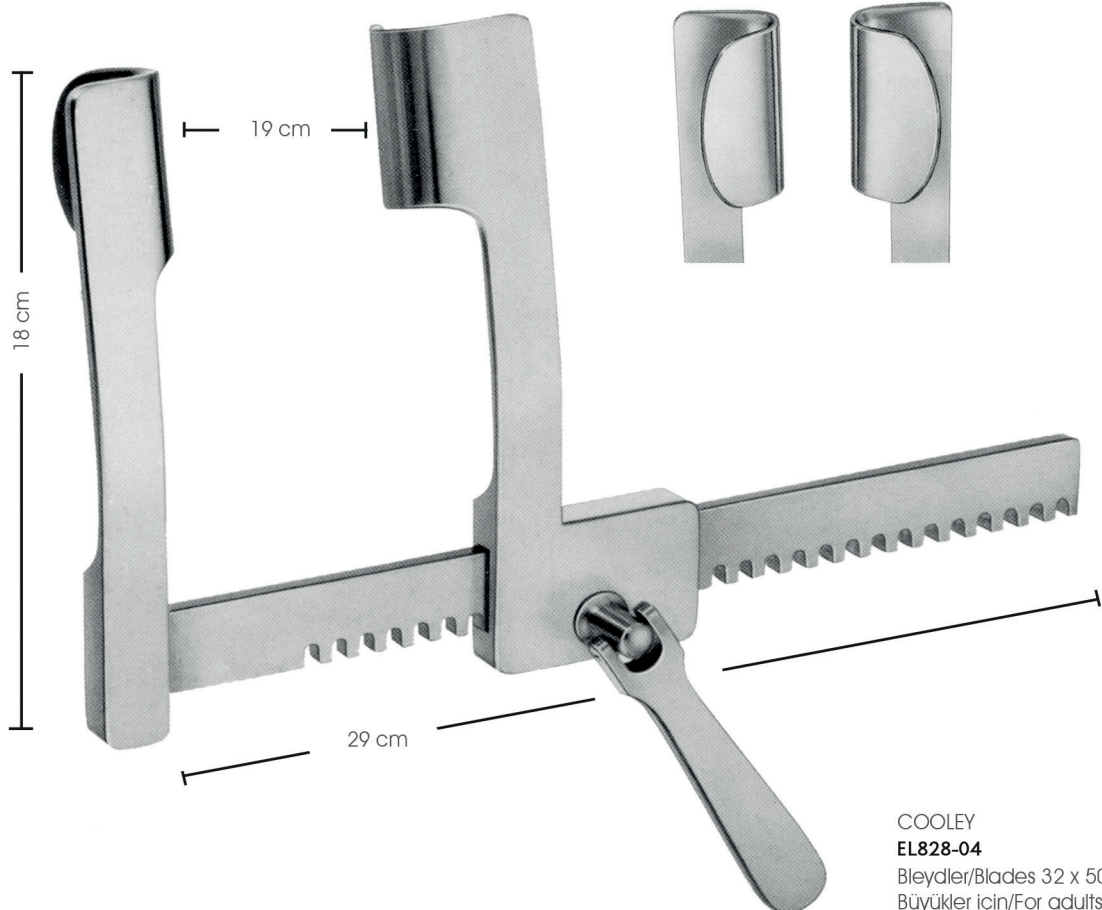
**EL826-06**  
Dönebilir bleydler  
With retable blades  
40 x 20 mm

**EL826-01**  
Sadece ekartör/Retractor only

**EL826-00**  
Göğüs ayırıcı komple  
Rib Spreader complete  
**EL826-01** Sadece ekartör/Retractor only  
**EL826-05** Bleyd/Blade  
**EL826-06** Bleyd/Blade  
**EL826-10** Bleyd/Blade



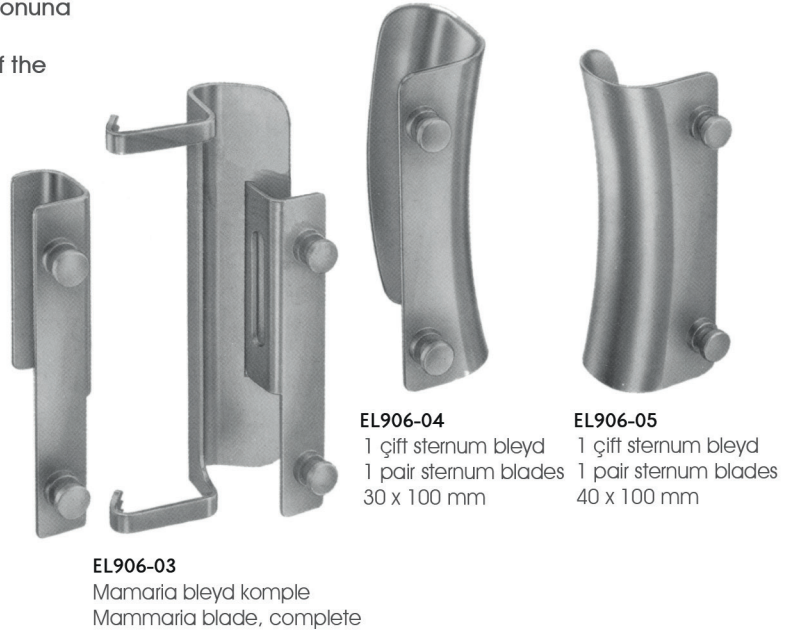
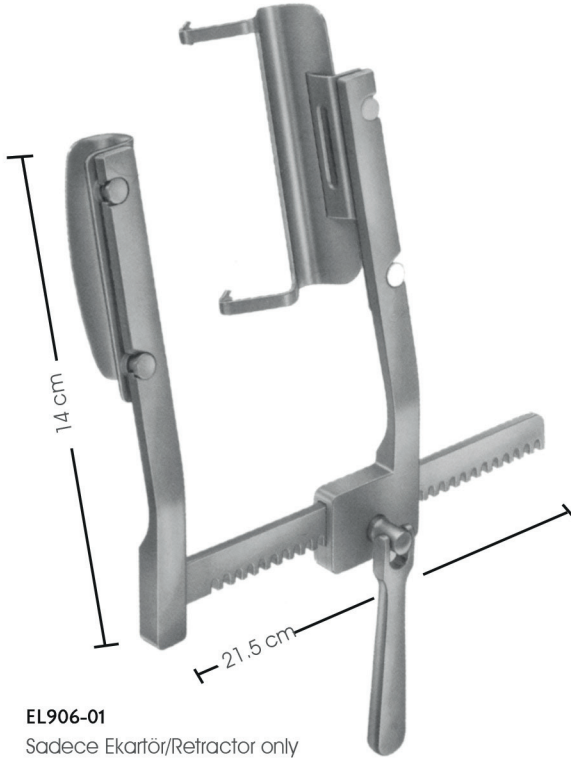
COOLEY  
**EL828-02**  
Bleydler/Blades 21 x 45 mm  
Çocuklar için/For children



COOLEY  
**EL828-04**  
Bleydler/Blades 32 x 50 mm  
Büyükler için/For adults

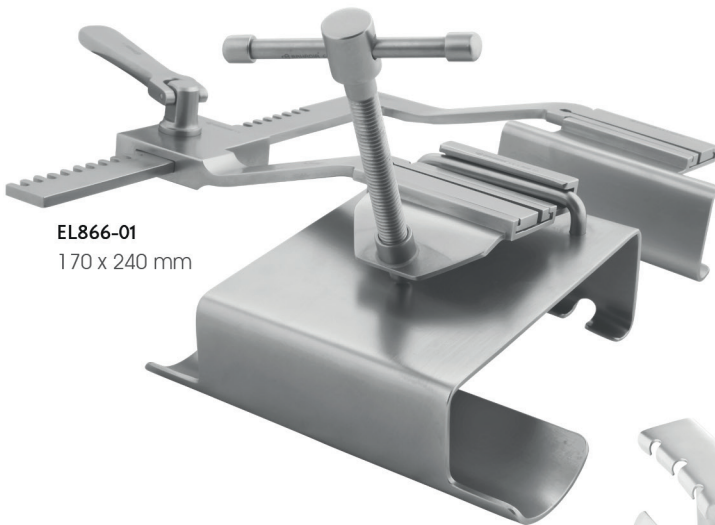


Sternum ekartör veya mamaria interna'nın operasyonuna hazırlanması için kullanılır.  
Used as Sternum retractor or used for preparation of the arteria mammaria interna.



EL906-00  
Mamaria ekartörü komple/Mammaria retractor complete  
EL906-01 Sadece ekartör/Retractor only  
EL906-03 Mamaria bleyd komple/Mammaria blade complete  
EL906-04 Sternum bleydler(Çift)/Sternum blades(Pair)  
EL906-05 Sternum bleydler(Çift)/Sternum blades(Pair)

### IMA Bleyd/IMA Blade



EL866-20  
Torasik Ekartör komple/Thoracic retractor complete  
EL866-01 Sadece ekartör/Retractor only  
EL866-05 Bleyd 1 adet/Blade 1 Piece  
EL866-06 Bleyd 1 adet/Blade 1 Piece  
EL866-08 Bleyd 1 adet/Blade 1 Piece  
EL866-09 Bleyd 1 adet/Blade 1 Piece  
EL866-10 Bleyd 1 adet/Blade 1 Piece



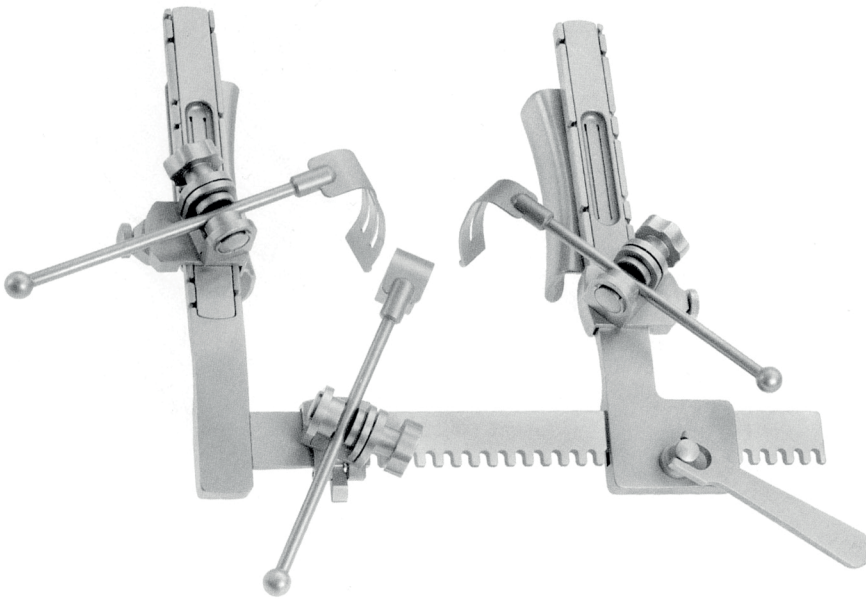


## Valf ekartör Sistemi

- Düşük operasyon platformu operasyon alanında cerrahın hareketleri için serbestlik sağlar.
- Aksesuar ve hukların sağlam tesbiti ve mükemmel uygulaması hızlı bağlantı konforu ile birleştirilmiştir.
- Taşıyıcılar kolların ve ayırıcı barların üzerine istenilen pozisyonda takılabilir veya sabitlenebilir.
- Yeni derin valf ekartör dizaynı derin göğüs kafesine sahip hastalarda çalışmak için uygundur.

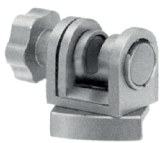
## Valve Retractor System

- The low operating platform provides freedom for surgeon movements in operation area.
- Strong fixation of accessories and hooks and excellent application combined with fast connection comfort.
- Carriers, can be fitted or fixed in any position on the arms and distinctive bars.
- The new deep-valve design of retractor is optimized to work on patients with deep rib cage.

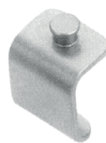


**EL864-05** 21 x 20 cm  
Sadece Ekartör/Retractor only

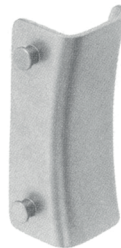
- EL864-00** Komple/Complete  
**EL864-05** Sadece ekartör/Retractor only  
**EL864-06** Bleyd 2 adet/Blade 2 piece  
**EL864-07** Bleyd 2 adet/Blade 2 piece  
**EL864-08** Bleyd 4 adet/Blade 4 piece  
**EL864-09** Bleyd 4 adet/Blade 4 piece  
**EL864-11** Bağlantı klampı 3 adet/Fixation clamp 3 piece  
**EL864-13** Ekartör 2 adet/Retractor 2 piece  
**EL864-14** Ekartör 2 adet/Retractor 2 piece  
**EL864-15** Ekartör 2 adet/Retractor 2 piece



**EL864-11**  
Bağlantı elmanı  
Joint piece



**EL864-08** 30 x 28 mm  
**EL864-09** 40 x 28 mm



**EL864-06** 30 x 100 mm  
**EL864-07** 40 x 100 mm



**EL864-13** Küçük/Small 18 x 52 mm  
**EL864-14** Orta/Medium 18 x 80 mm  
**EL864-15** Büyük/Large 22 x 80 mm





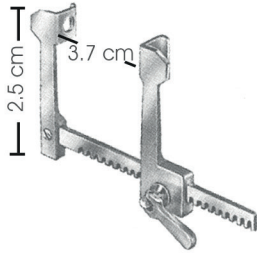
**EL830-06**  
Bleydler/Blades 75 x 75 mm



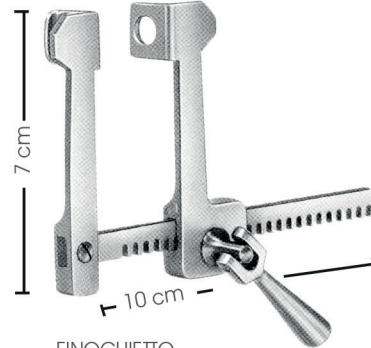
**EL830-05**  
Bleydler/Blades 42 x 65 mm

**EL830-02**  
Sadece Ekartör/Retractor only

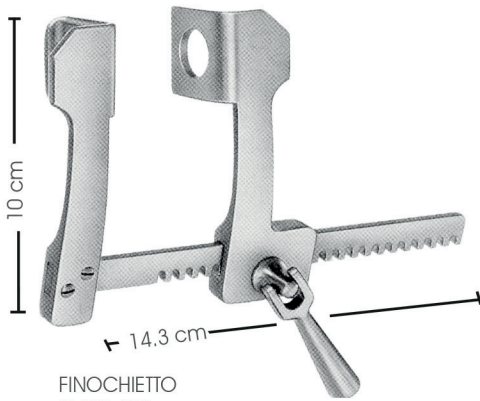
- EL830-01** Komple/Complete
- EL830-02** Sadece ekartör/Retractor only
- EL830-05** Bleyd(çift)/Blade(pair)
- EL830-06** Bleyd(çift)/Blade(pair)



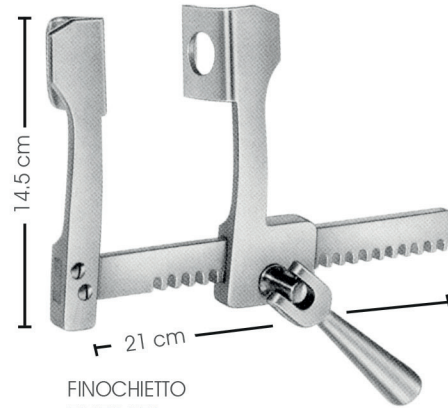
MINI FINOCHIETTO  
**EL875-00A**  
Bleydler/Blades 6 x 7 mm



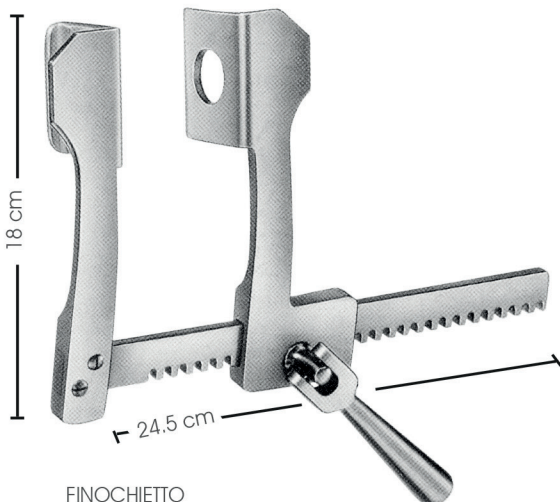
FINOCHIETTO  
**EL875-02A**  
Bleydler/Blades  
12 x 15 mm



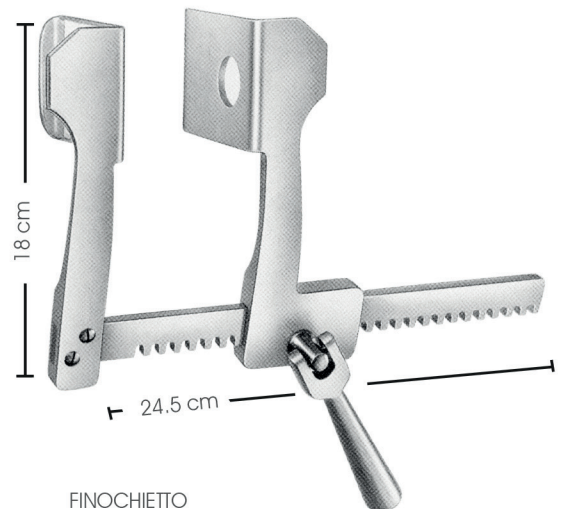
FINOCHIETTO  
**EL875-05A**  
Bleydler/Blades  
28 x 30 mm



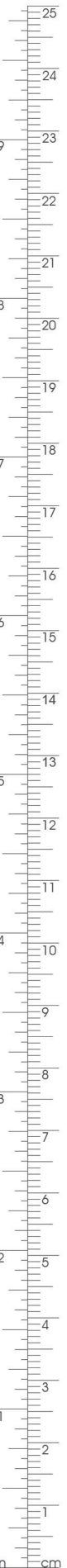
FINOCHIETTO  
**EL875-07A**  
Bleydler/Blades  
31 x 45 mm



FINOCHIETTO  
**EL875-10A**  
Bleydler/Blades  
42 x 61 mm



FINOCHIETTO  
**EL875-13A**  
Bleydler/Blades  
74 x 64 mm







45 x 30 mm

1/2

COOLEY  
**EK695-00P**  
İnce dişli/Slightly serrated  
26.5 cm



45 x 35 mm

1/2

COOLEY  
**EK695-01P**  
İnce Dişli/Slightly serrated  
26.5 cm



45 x 48 mm

1/2

COOLEY  
**EK695-02P**  
Sağ ince dişli/Right, slightly serrated  
27 cm



45 x 48 mm

1/2

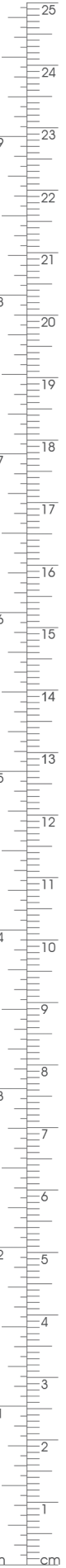
COOLEY  
EK696-02P  
Sağ/Right  
27 cm



25 x 46 mm

1/2

COOLEY  
EK697-02P  
Sol/Left  
28 cm







COOLEY  
**EK695-00** 45 x 30 mm  
**EK695-01** 45 x 35 mm  
**EK695-02** 45 x 48 mm  
İnce dişli/Slightly serrated  
26.5 cm



COOLEY  
**EK696-00** 45 x 30 mm  
**EK696-01** 45 x 35 mm  
**EK696-02** 45 x 48 mm  
Dişsiz/Unserrated  
24.5 cm



COOLEY  
**EK697-02** 25 x 46 mm  
Sol/Left  
28 cm



1/2

BOROWSKI

EK694-00-EK694-05

Bükülebilir şaft/Malleable shaft  
27 cm



EK694-00  
17 x 21 mm



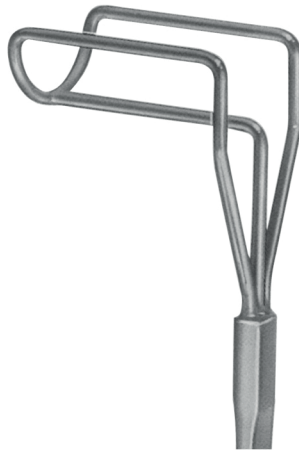
1/1  
EK694-01  
16 x 23 mm



EK694-02  
20 x 25 mm



1/1  
EK694-03  
24 x 27 mm

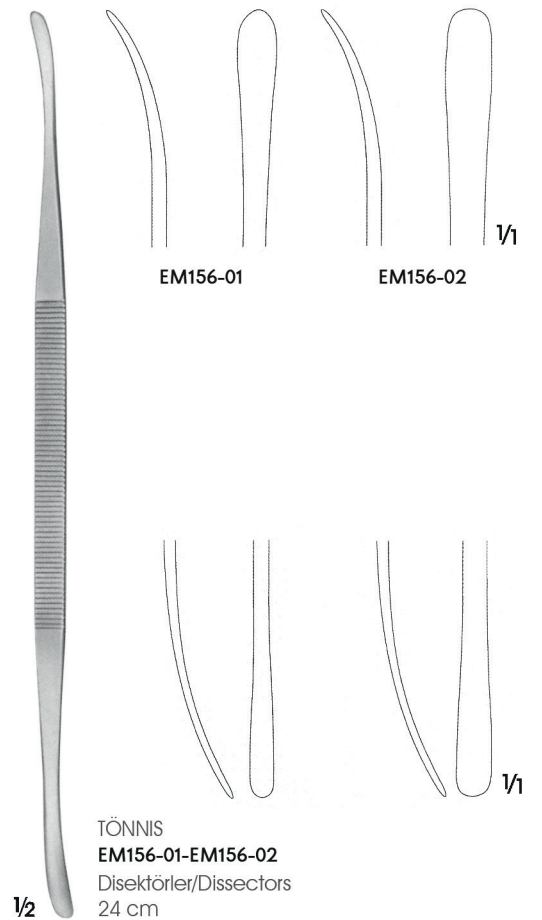
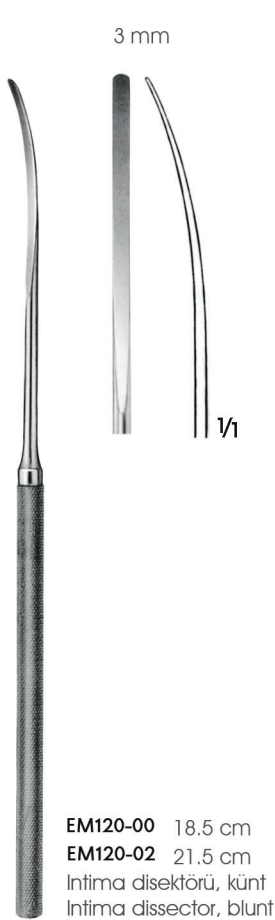
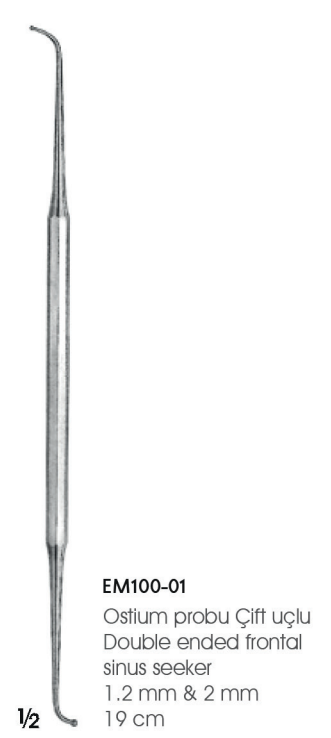
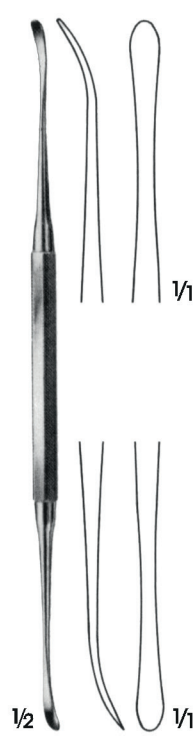
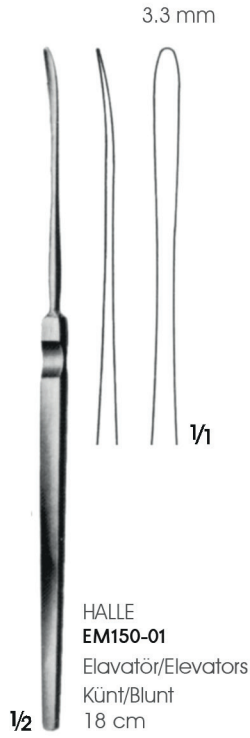


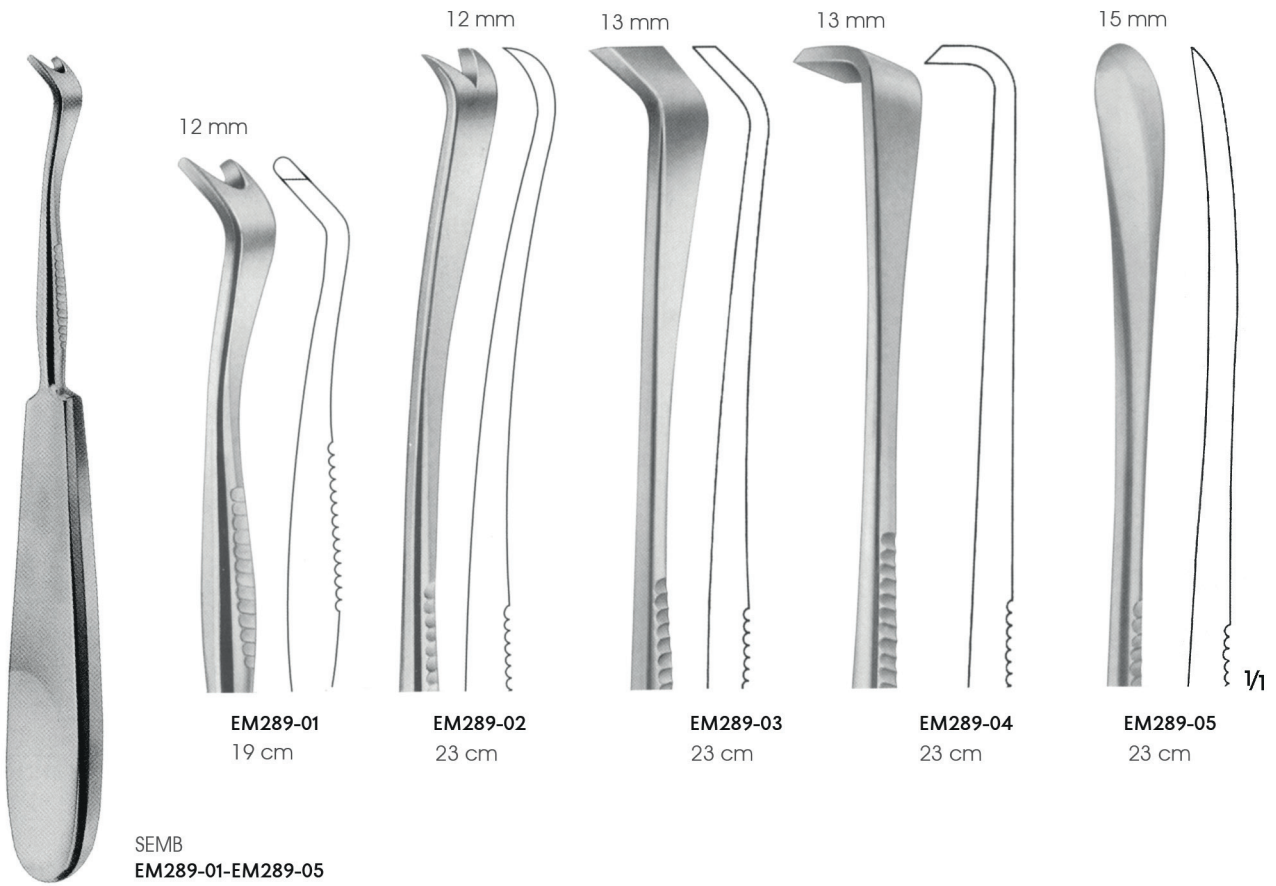
EK694-04  
28 x 20 mm



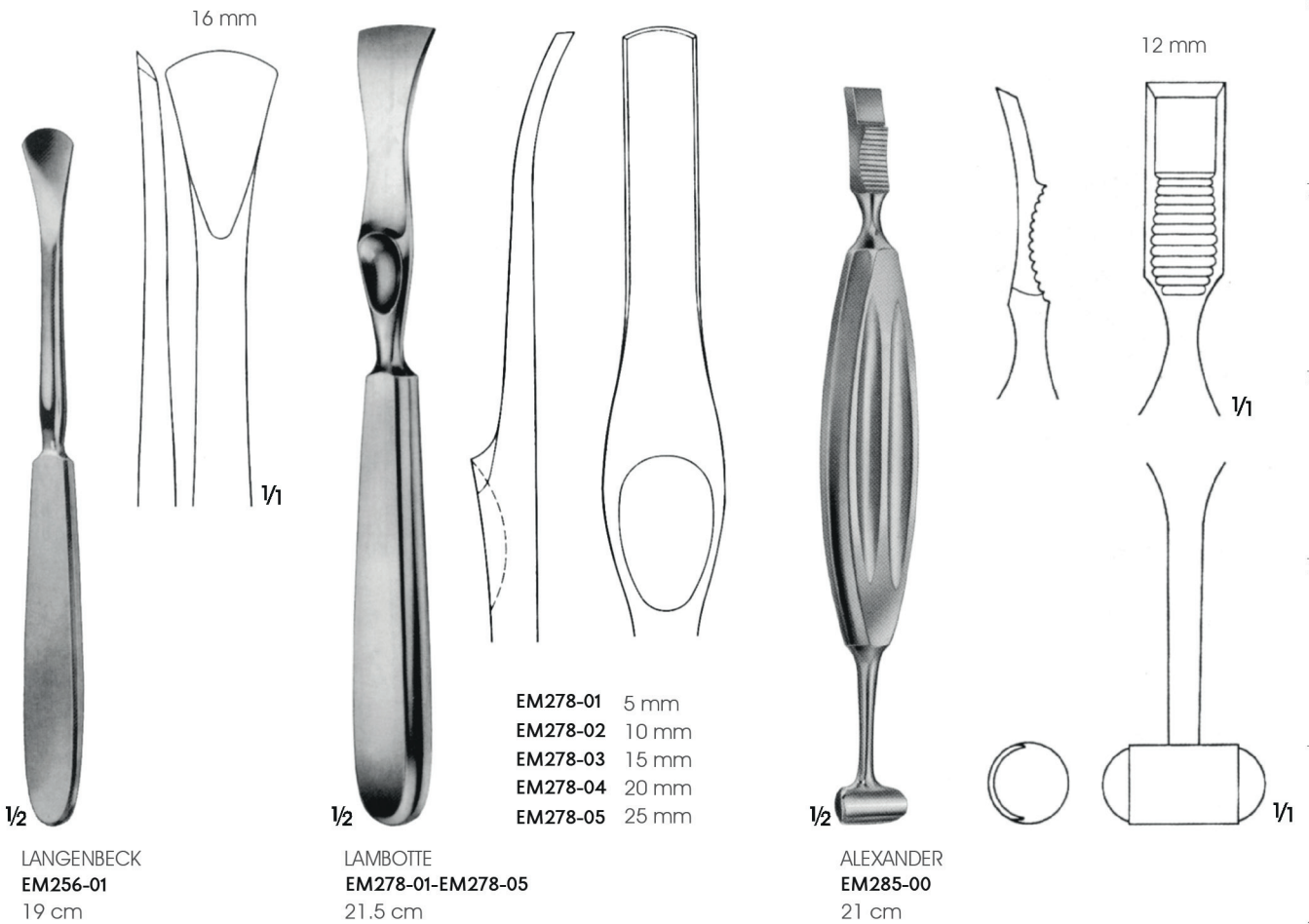
1/1  
EK694-05  
28 x 29 mm







SEMB  
EM289-01-EM289-05



LANGENBECK  
EM256-01  
19 cm

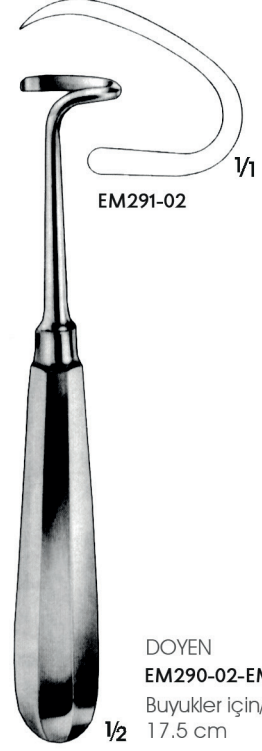
LAMBOTTE  
EM278-01-EM278-05  
21.5 cm

ALEXANDER  
EM285-00  
21 cm





DOYEN  
EM290-01-EM291-01  
Çocuklar için/For children  
17.5 cm



DOYEN  
EM290-02-EM291-02  
Büyükler için/For adults  
17.5 cm



DOYEN  
EM292-01-EM293-01  
24 cm





**NABATOFF**

- EJ500-00** Damar temizleme seti/Vein stripper set, consisting of
- EJ500-01** Metal kutu/Metal case
- EJ500-11** Esnek kablo 90 cm/Flexible cable 90 cm
- EJ500-03** Esnek plastik sonda ucu/Flexible plastic probe tip
- EJ500-04** Metal sonda ucu/Metal Probe tip
- EJ500-05** Metal uç/Metal end Ø 6 mm
- EJ500-06** Metal uç/Metal end Ø 9 mm
- EJ500-07** Metal uç/Metal end Ø 12 mm
- EJ500-08** Metal uç/Metal end Ø 15 mm
- EJ500-10** Esnek kablo sapı/Handle for flexible cable



**EJ500-03**  
Esnek plastik sonda ucu  
Flexible plastic probe tip



**EJ500-04**  
Ø 3 mm  
Metal sonda ucu  
Metal Probe tip



**EJ500-05**  
Ø 6 mm



**EJ500-06**  
Ø 9 mm



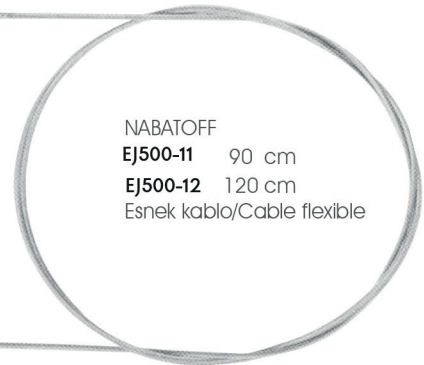
**EJ500-07**  
Ø 12 mm



**EJ500-08**  
Ø 15 mm



**NABATOFF**  
**EJ500-10**  
Sadece sap  
Handle only



**NABATOFF**  
**EJ500-11** 90 cm  
**EJ500-12** 120 cm  
Esnek kablo/Cable flexible



**VARADY**

- EJ502-00** Mini damar temizleme seti  
Mini vein stripper set
- EJ500-00** Metal kutu/Metal case
- EJ502-01** Esnek kablo 45 cm/Flexible cable 45 cm
- EJ502-03** Metal uc/Metal end Ø 3 mm
- EJ502-04** Metal uc/Metal end Ø 4 mm
- EJ502-05** Metal uc/Metal end Ø 5 mm



**VARADY**  
**EJ502-01**  
Esnek kablo  
Flexible cable  
45 cm



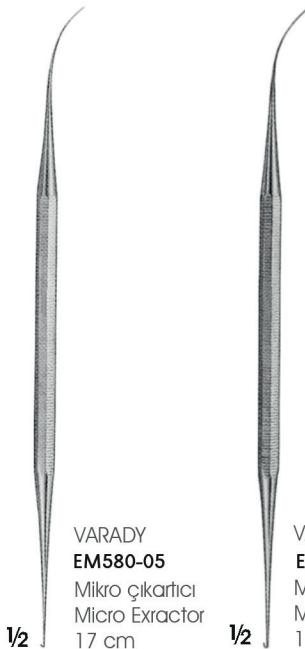
**EJ502-03**  
Ø 3 mm



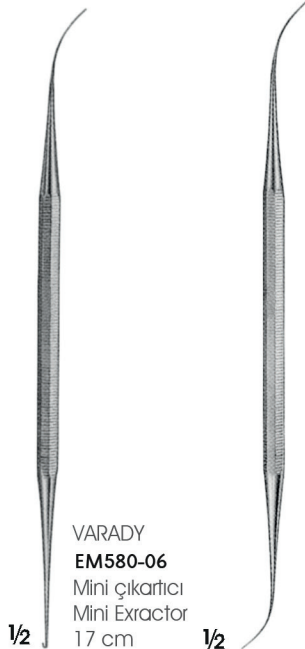
**EJ502-04**  
Ø 4 mm



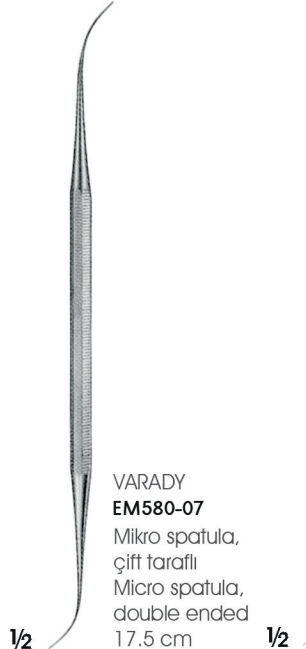
**EJ502-05**  
Ø 5 mm



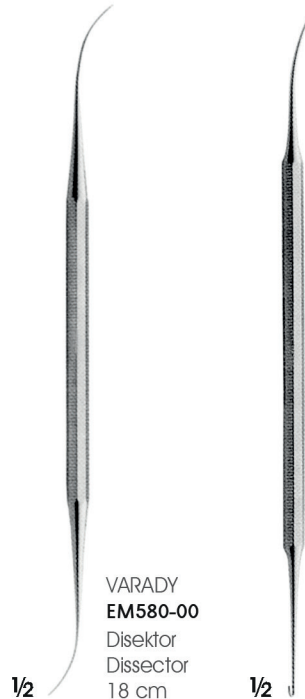
**VARADY**  
**EM580-05**  
Mikro çıkartıcı  
Micro Extractor  
17 cm



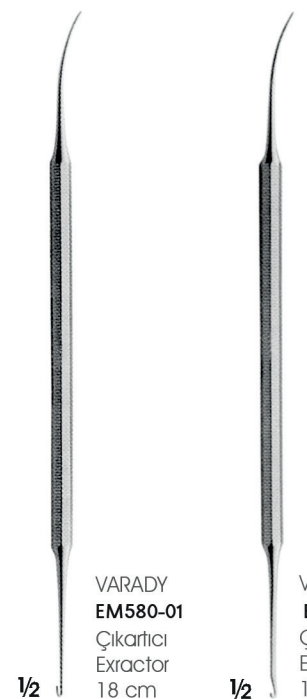
**VARADY**  
**EM580-06**  
Mini çıkartıcı  
Mini Extractor  
17 cm



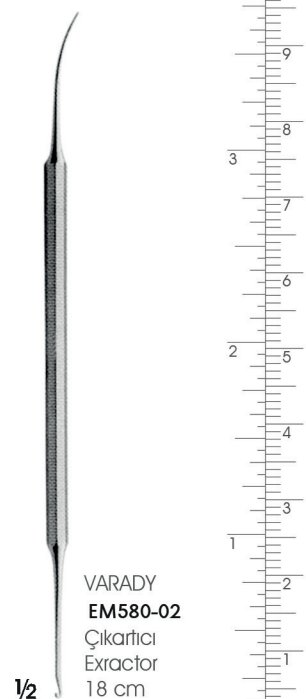
**VARADY**  
**EM580-07**  
Mikro spatula,  
çift taraflı  
Micro spatula,  
double ended  
17.5 cm



**VARADY**  
**EM580-08**  
Disektör  
Dissector  
18 cm



**VARADY**  
**EM580-09**  
Çıkartıcı  
Extractor  
18 cm



**VARADY**  
**EM580-10**  
Çıkartıcı  
Extractor  
18 cm



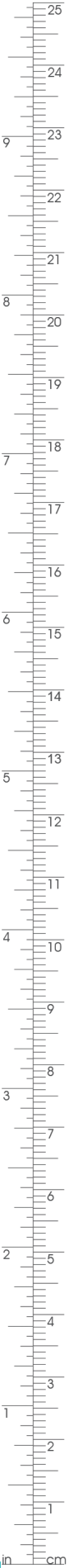
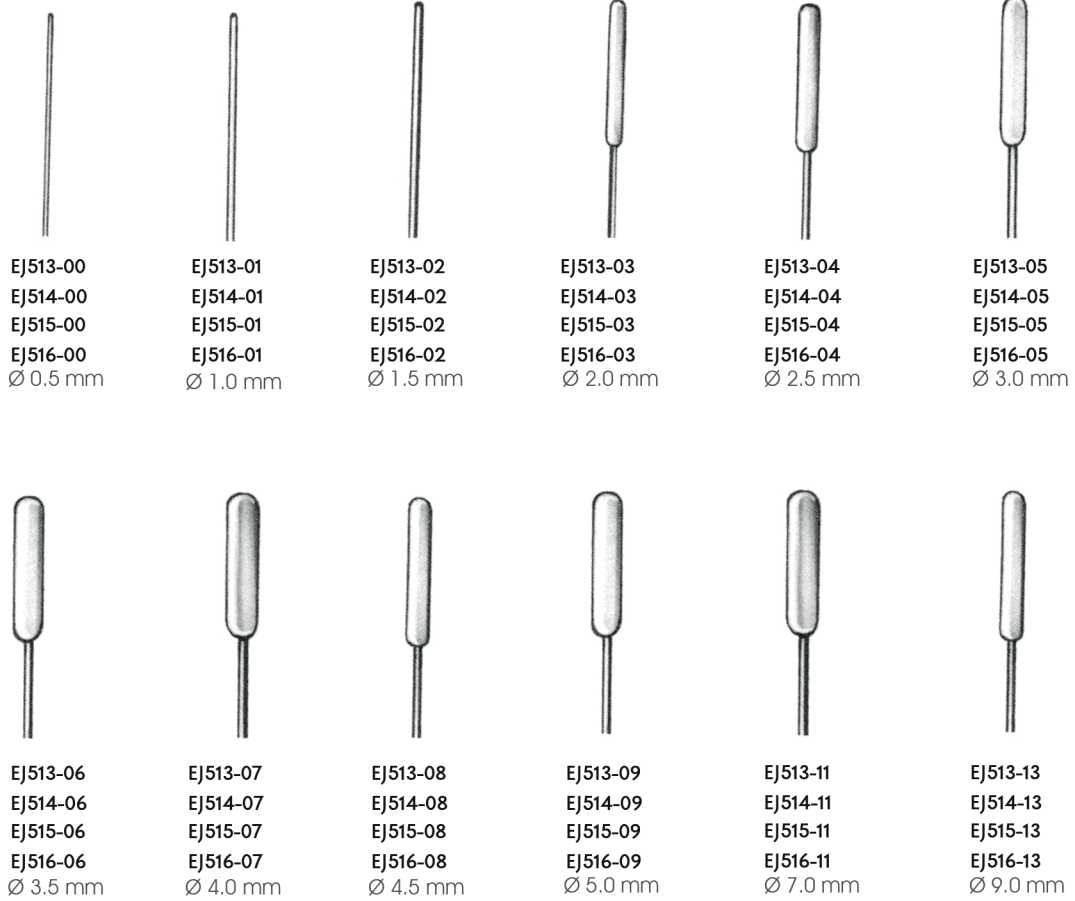


DE BAKEY

EJ510-02-EJ510-17 .17 19 cm

EJ511-02-EJ511-17 .17 38 cm

Damar dilatörleri, bükülebilir  
Vascular dilators, malleable

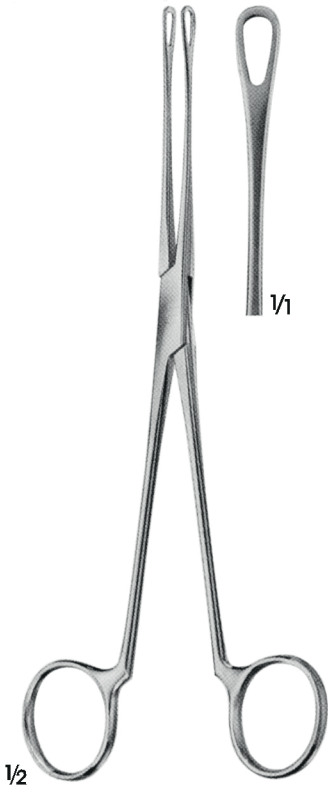


GARRET

EJ513-00-EJ513-13 14 cm  
EJ514-00-EJ514-13 19 cm  
EJ515-00-EJ515-13 21 cm  
EJ516-00-EJ516-13 35 cm

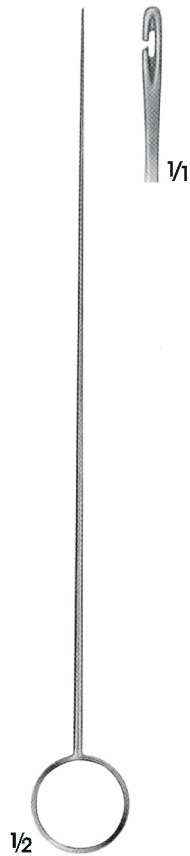
Bükülebilir/Malleable





1/2

BLAKE  
EE620-00  
Emboli tutma pensi  
Embolus grasping forceps  
20.5 cm



1/2

EJ530-05  
Sadece klavuz  
Guide only



1/2

EJ530-06  
Sadece klavuz  
Guide only



1/2

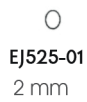
RUMEL-BELMONT  
Turnikeler/Tourniquets  
EJ530-01 Ø 4.0 mm  
EJ530-02 Ø 6.4 mm  
32.5 cm



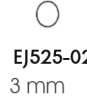
EJ525-12  
EJ525-01-EJ525-09  
Sap/For handle  
11 cm



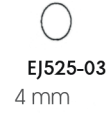
EJ525-01-EJ525-09  
Endarterektomi sıyrıcı  
Endarterectomy strippers  
55 cm



EJ525-01  
2 mm



EJ525-02  
3 mm



EJ525-03  
4 mm



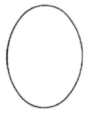
EJ525-04  
6 mm



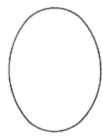
EJ525-05  
7 mm



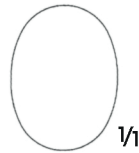
EJ525-06  
8,5 mm



EJ525-07  
10 mm



EJ525-08  
12 mm

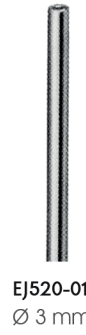


EJ525-09  
14 mm



EJ520-01-EJ520-04  
LUER  
LOCK

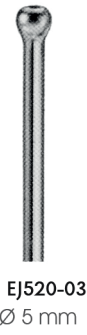
SCHMID  
EJ520-01-EJ520-04  
Damar sulama kanülleri,  
Paslanmaz çelik  
Vessel irrigating cannulae,  
stainless steel  
15 cm



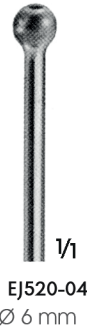
EJ520-01  
Ø 3 mm



EJ520-02  
Ø 4 mm



EJ520-03  
Ø 5 mm



EJ520-04  
Ø 6 mm





1/2

**EL761-00-EL761-02**  
Aort pançları/Aorta punches  
14 cm



**EL761-00**  
Ø 4 mm

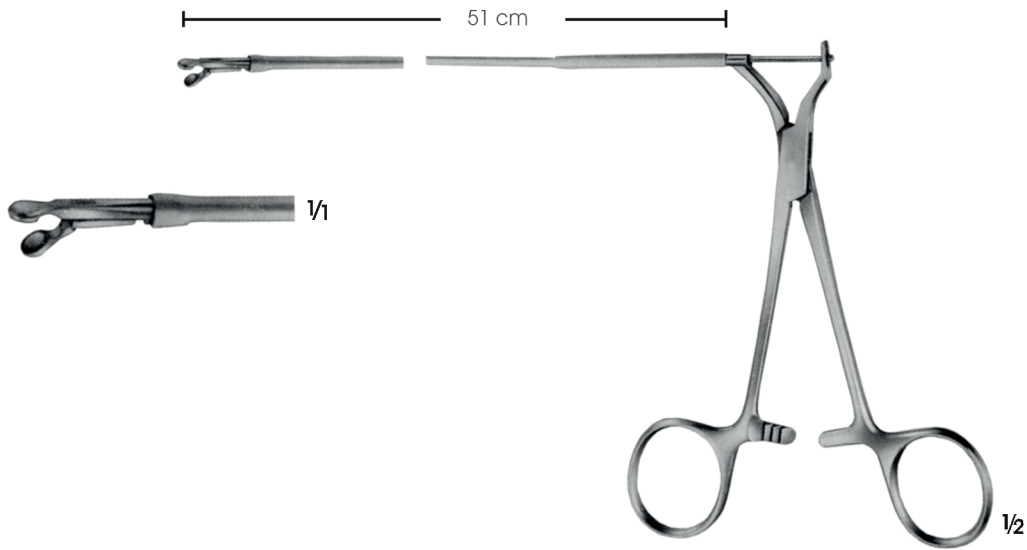


**EL761-01**  
Ø 5 mm



**EL761-02**  
Ø 6 mm

1/1



51 cm

1/1

1/2

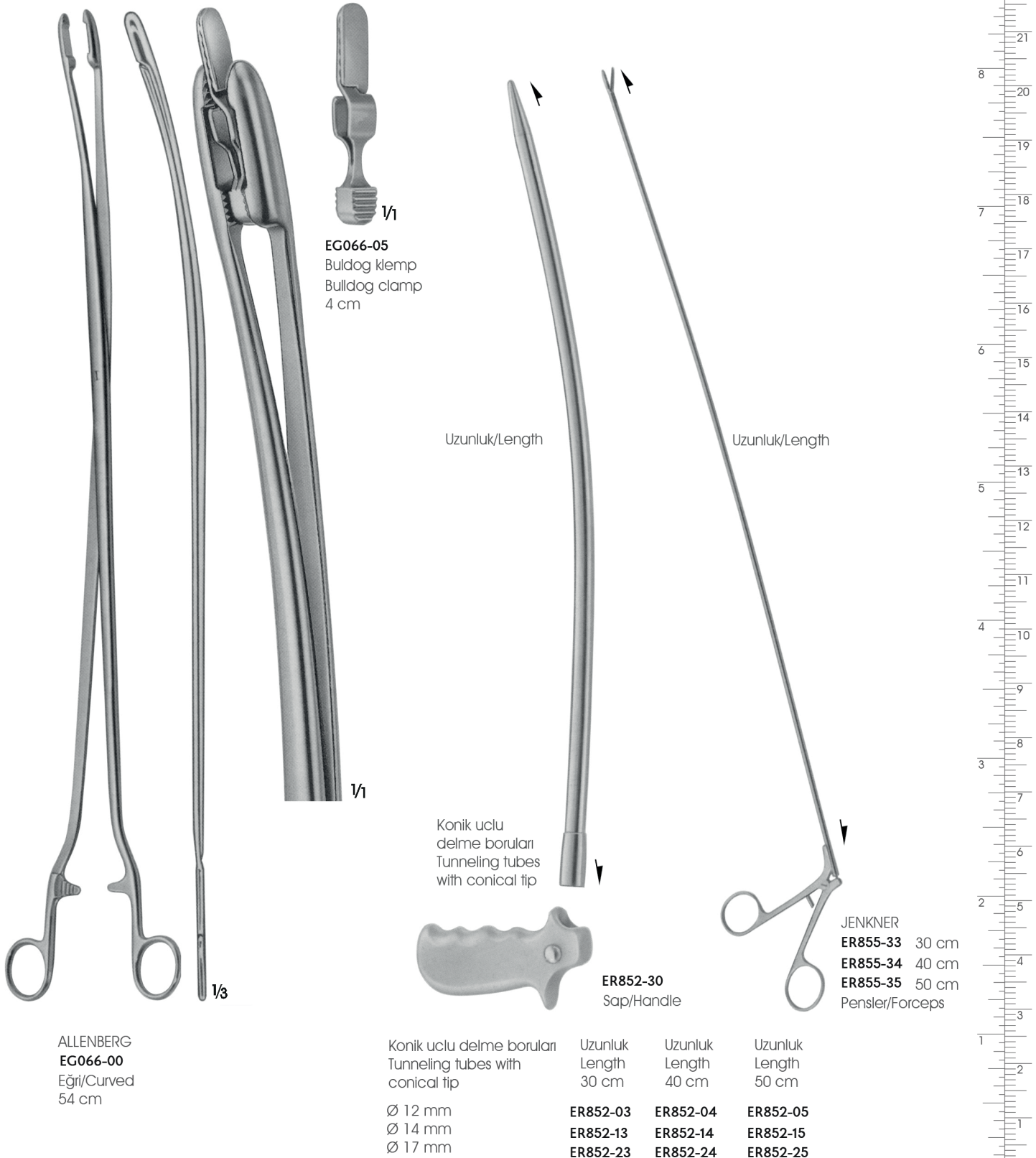
**SCHULZ**  
**ER850-01**

Esnek milli biyoptom, 51 cm uzunlugunda  
Ø 3 mm yuvarlak çeneli  
Bioptome, with flexible shaft 51 cm long,  
with round jaws Ø 3 mm



Buldog pens sürücüsü, ince ve hafif eğri yapısı ile tünel boyunca kolay ilerleme sağlar.  
Buldog pensini güvenli şekilde kavrar.

The slight curvature of the introducer forceps permits handling during tunneling. Here the prosthesis can be drawn in by applying the introducer forceps directly to the prosthesis (alloplastic prosthesis) or can be drawn in by means of the buldog clamp (autologous/homologous prosthesis). Thanks to the interlocking fit, the buldog clamp rests non-displaceable and securely in the mouth of the introducer forceps.



ALLENBERG  
EG066-00  
Eğri/Curved  
54 cm

EG066-05  
Buldog klamp  
Bulldog clamp  
4 cm

Konik uclu delme boruları  
Tunnelling tubes with  
conical tip

Ø 12 mm  
Ø 14 mm  
Ø 17 mm

Uzunluk  
Length  
30 cm

ER852-03  
ER852-13  
ER852-23

Uzunluk  
Length  
40 cm

ER852-04  
ER852-14  
ER852-24

Uzunluk  
Length  
50 cm

ER852-05  
ER852-15  
ER852-25

ER852-30  
Sap/Handle

JENKNER  
ER855-33 30 cm  
ER855-34 40 cm  
ER855-35 50 cm  
Pensler/Forceps



WITT  
**EJ710-00** 1.5 x 35 mm  
**EJ710-02** 1.5 x 51 mm  
Sternal delme iğnesi,  
Luer bağlantılı  
Sternal puncture needle  
with Luer cone

1/1



Tek ağız tırıllı  
One jaw serrated

BRAUN-STADLER  
**EC604-00**  
Çocuklar için Sternum makası  
Sternum shears for children  
20 cm

1/2

1/1



SCHUMACHER  
**EP505-00**  
Sternum makası  
Sternum shears  
21 cm

1/2



LEBSCHER  
**EM598-00**  
Sternum çizili  
Sternum chisel  
20 cm

1/2



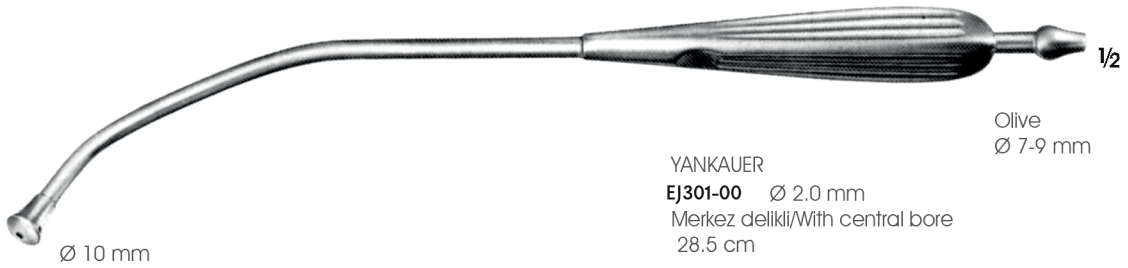
Ø 15 mm

FINSTERER  
EJ600-00

Kombine aspiratör ucu  
ve irrigasyon kanülü  
Combined suction and  
irrigation cannula  
32 cm

Olive  
Ø 9-13 mm

1/2



Ø 10 mm

YANKAUER

EJ301-00 Ø 2.0 mm  
Merkez delikli/With central bore  
28.5 cm

Olive  
Ø 7-9 mm

1/2



Ø 9 mm

DE BAKEY

EJ304-00  
Merkez delikli, Ø 3.0 mm yanıl yuvalı  
With central bore, Ø 3.0 mm with lateral  
slots  
27.5 cm

Olive  
Ø 6-10 mm

1/2



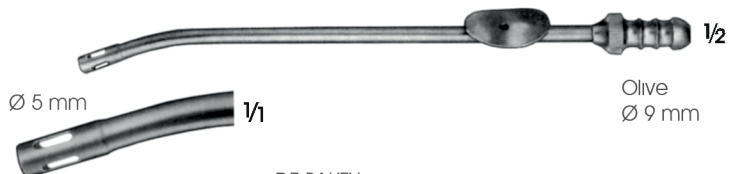
Ø 5 mm

DE BAKEY

EJ306-00  
Parmak kumandalı, temizleme teli  
With finger cut-off and stylet  
27 cm

Olive  
Ø 9 mm

1/2



Ø 5 mm

DE BAKEY

EJ708-00  
Parmak kumandalı, temizleme teli  
With finger cut-off and stylet  
16 cm

Olive  
Ø 9 mm

1/2









SAUERBRUCH  
EP500-01  
Çocuklar için  
For children  
24 cm

EP500-02  
Büyükler için  
For adults  
27 cm

1/3



GLUCK  
EP510-00  
19 cm

1/3



EP513-01  
23 cm



GIERTZ-STILLE  
EP502-01  
25 cm

1/3



BRUNNER  
EP520-01  
Üniversal model  
Universal pattern  
34 cm

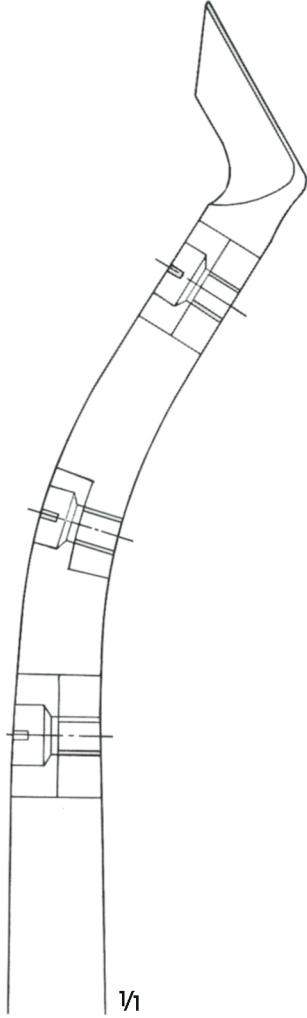
1/3



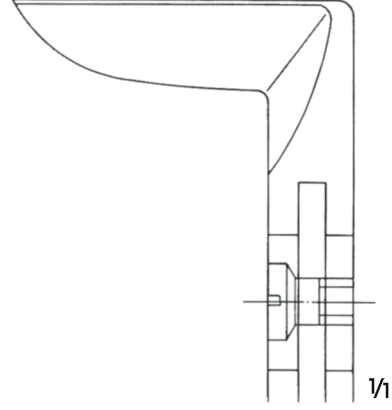
BETHUNE  
EP515-00  
34 cm

1/3



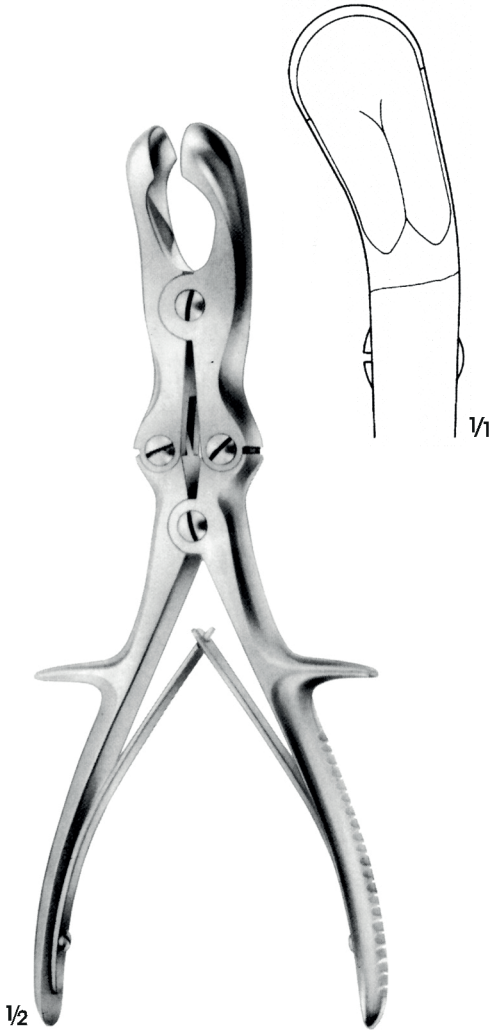


**LISTON-KEY-HORSLEY**  
**EP379-01**  
S şekilli, arka kaburga uçları için  
S-Shaped for posterior rib ends  
25.5 cm



**LISTON -STILLE**  
**EP378-01**  
Açılı/Aggled  
26.5 cm





SEM B  
EP325-01  
Kemik ronjur  
kaba kemikleri için  
Rib rongeur to shorten  
the rib stumps  
24 cm



SAUERBRUCH-CORYLLOS  
EP333-01-EP335-01  
Kemik ronjur  
kaba kemikleri için  
Rib rongeur to shorten  
the rib stumps  
31 cm

